

Wednesday 18 January 2012 – Afternoon

AS GCE BIOLOGY

F212 Molecules, Biodiversity, Food and Health

Candidates answer on the Question Paper.

OCR supplied materials:

- Insert (inserted)

Other materials required:

- Electronic calculator
- Ruler (cm/mm)

Duration: 1 hour 45 minutes




Candidate forename		Candidate surname	
-----------------------	--	----------------------	--

Centre number						Candidate number				
---------------	--	--	--	--	--	------------------	--	--	--	--

INSTRUCTIONS TO CANDIDATES

- The Insert will be found in the centre of this document.
- Write your name, centre number and candidate number in the boxes above. Please write clearly and in capital letters.
- Use black ink. HB pencil may be used for graphs and diagrams only.
- Answer **all** the questions.
- Read each question carefully. Make sure you know what you have to do before starting your answer.
- Write your answer to each question in the space provided. If additional space is required, you should use the lined pages at the end of this booklet. The question number(s) must be clearly shown.
- Do **not** write in the bar codes.

INFORMATION FOR CANDIDATES

- The number of marks is given in brackets [] at the end of each question or part question.
- The total number of marks for this paper is **100**.
-  Where you see this icon you will be awarded marks for the quality of written communication in your answer.
- You may use an electronic calculator.
- You are advised to show all the steps in any calculations.
- This document consists of **24** pages. Any blank pages are indicated.

BLANK PAGE

PLEASE DO NOT WRITE ON THIS PAGE

Answer **all** the questions.

1 Biological molecules are held together by a variety of bonds.

(a) The diagram in Fig. 1.1 represents an amino acid.

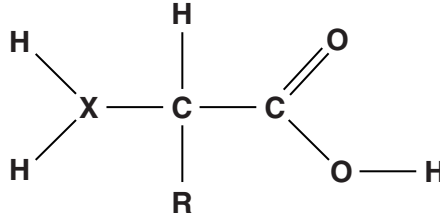


Fig. 1.1

(i) One of the atoms that make up an amino acid has been replaced with the letter **X**.

State the chemical symbol of the atom represented by the letter **X** in Fig. 1.1.

..... [1]

(ii) Name the polymer formed from a chain of amino acids.

..... [1]

(iii) Name the bond that is formed when two amino acids are joined together. Describe the formation of this bond.

name of bond

description of formation

.....

 [3]

.....
.....
.....
.....
..... [9]

(ii) List **three other** examples of where hydrogen bonds are found in biological molecules.

1
2
3 [3]

[Total: 17]

2 Malaria is a disease caused by a eukaryotic parasite.

(a) State **two** features of the malarial parasite that indicate that it is **not** a prokaryote.

1

2 [2]

(b) In a piece of word-processed homework, a student stated that one species of parasite that causes malaria is called:

Plasmodium Vivax

State **one** error made by the student.

.....

..... [1]

(c) The malarial parasite is carried by an insect, the female *Anopheles* mosquito.

(i) Describe how the mosquito transmits the malarial parasite to a human.

.....
.....
.....
.....
.....
.....
.....
.....
.....
.....
..... [3]

- (ii) In order to fight the spread of malaria, insecticides have been used in areas where the *Anopheles* mosquito breeds.

One problem that can occur when using insecticides in this way is the development of insecticide resistance.

Suggest **one other** reason why some people might be concerned about using insecticides.

.....
.....
..... [1]

- (iii) Suggest how the effects of insecticide use on a population of *Anopheles* mosquitoes could be measured **and** state the steps that should be taken in order to produce valid and reliable results.

.....
.....
.....
.....
.....
.....
.....
.....
.....
.....
.....
.....
.....
.....
.....
.....
.....
.....
.....
.....
.....
..... [5]

[Total: 12]

3 Cholesterol is an important biological molecule.

(a) State **two** roles of cholesterol in living organisms.

- 1
-
- 2
- [2]

(b) Fig. 3.1 represents the structure of a cholesterol molecule.

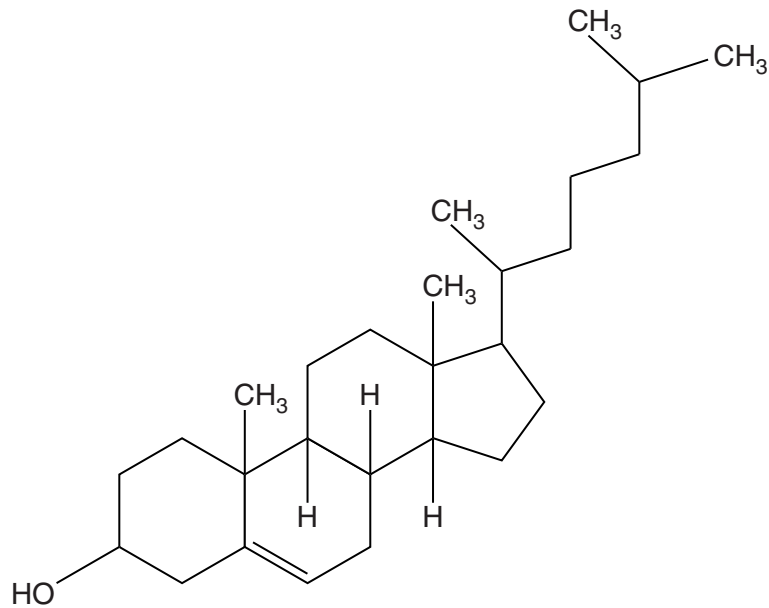


Fig. 3.1

(i) Identify **one** way in which the molecular structure of cholesterol is similar to the molecular structure of a carbohydrate.

..... [1]

(ii) Cholesterol is transported in the blood within molecules of low-density lipoprotein (LDL).

Name **two** molecules that combine with cholesterol to form LDLs.

.....

..... [2]

- (c) (i) In countries such as the UK, in which red meat forms a large part of the diet, people tend to have high levels of blood cholesterol compared with people in countries in which little red meat is eaten.

Suggest why diets with a high red meat content are associated with high blood cholesterol.

.....
.....
.....
.....
..... [2]

- (ii) Name a disease, other than atherosclerosis, for which high blood cholesterol is a risk factor.

..... [1]

[Total: 15]

11
BLANK PAGE

QUESTION 4 STARTS ON PAGE 12
PLEASE DO NOT WRITE ON THIS PAGE

4 The system used by scientists for classifying living things has developed from the original classification system proposed by Carl Linnaeus around 250 years ago.

(a) Complete the following paragraph by using the most appropriate term(s).

The system of classifying organisms according to their observable features or genetic characteristics is called Organisms are classified into large groups which are then subdivided into increasingly smaller groups. A system such as this is called a The term that describes the evolutionary relationship between organisms is

[3]

(b) New Zealand is made up of two large and many smaller islands and is situated a long distance from any other land mass.

In New Zealand there is a large variety of birds not found elsewhere in the world.

Among its many species of the parrot family, Psittacidae, are:

- kaka (*Nestor meridionalis*)
- kea (*Nestor notabilis*)
- kakapo (*Strigops habroptila*)

These birds are shown in Fig. 4.1 **on the insert**.

(i) State **two** characteristics that birds, such as parrots, share with other members of the animal kingdom.

1

2 [2]

(ii) Name the **domain** to which the parrot belongs.

..... [1]

(c) The kakapo is one of the world's largest and rarest parrot species. The variation in mass of adult birds in the kakapo population has been reported to be between 950 g and 4000 g.

(i) Define the term *variation*.

.....
.....
.....
..... [2]

(ii) Suggest **two** reasons why the kakapo varies in size.

1
2 [2]

(iii) Suggest **two** reasons why the reported mass range for the adult kakapo may not be accurate.

1
.....
2
..... [2]

(d) At some point in the past, distinct species of New Zealand parrot are likely to have arisen from an original ancestral population.

State the name of the process by which new species arise **and** suggest the mechanisms necessary for this process to occur.

name of process

mechanisms necessary for this process to occur

.....
.....
.....
.....
.....
.....
.....
..... [3]

[Total: 19]

15
BLANK PAGE

QUESTION 5 STARTS ON PAGE 16
PLEASE DO NOT WRITE ON THIS PAGE

- 5 (a) The black poplar was once a common tree throughout southern Britain. Its numbers have decreased by 94% since 1942 and it is in danger of becoming extinct in the wild.

There are thought to be approximately 2500 black poplars surviving in Britain today.

Use the information above to calculate the original number of black poplar trees in 1942.

Show your working.

Answer = [2]

- (b) Species such as the black poplar contribute to the biodiversity of the UK.

Suggest **three** reasons why the conservation of the black poplar is important.

- 1
-
- 2
-
- 3
- [3]

- (c) Botanic gardens are important in the conservation of plant species.

- (i) State why the conservation of a species in a botanic garden is described as *ex situ*.

.....
..... [1]

6 (a) In his book 'On the Origin of Species', Charles Darwin made the following four observations:

- W** Offspring generally appear similar to their parents.
- X** No two individuals are identical.
- Y** Organisms have the ability to produce large numbers of offspring.
- Z** Populations in nature tend to remain relatively stable.

From these observations he made a number of deductions, which are listed below in Table 6.1.

The deductions are supported by one **or more** of the observations (**W**, **X**, **Y** or **Z**).

In Table 6.1, indicate which of the above observations supported each deduction.

You may use each letter (**W**, **X**, **Y**, or **Z**) once, more than once or not at all.

Table 6.1

deduction	supporting observation(s)
characteristics are passed on to the next generation	
there is a struggle for existence	
individuals with beneficial characteristics are among the few who survive	

[3]

(b) Resistance to antibiotics has evolved in some pathogenic bacteria, such as MRSA.

Suggest why the resistance of MRSA to existing antibiotics is of major concern to humans.

.....
.....
.....
.....
..... [2]

(c) The evolution of antibiotic resistance in bacteria is evidence to support the theory of evolution.

How does **fossil** evidence support the idea that evolution has taken place?

.....
.....
.....
.....
.....
.....
.....
.....
.....
..... [3]

[Total: 8]

QUESTION 7 STARTS ON PAGE 20

- 7 (a) Lymphocytes are important components of the immune system and can be classified into B lymphocytes and T lymphocytes.

For each of the statements in the table below, identify whether the description applies to:

- only B lymphocytes
- only T lymphocytes
- both B and T lymphocytes
- neither.

You may use each response once, more than once, or not at all. The first one has been done for you.

statement	can be applied to ...
form part of immune response	<i>both</i>
matured in thymus	
secrete substances which kill infected cells	
manufacture antibodies	
undergo clonal expansion	
activate other lymphocytes	

[5]

(b) Fig. 7.1 shows the concentration of antibodies in a patient's blood following an initial infection with a pathogen. This is known as the primary response.

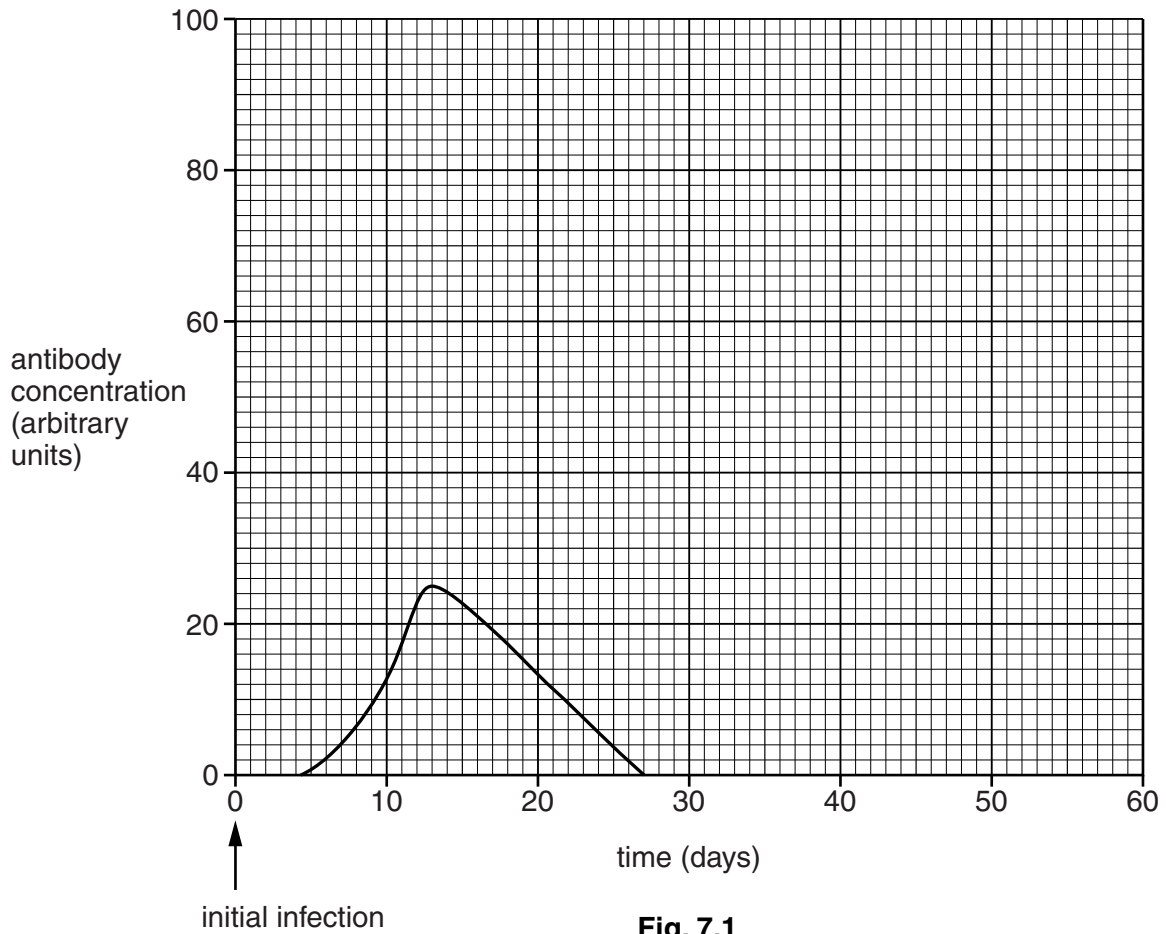


Fig. 7.1

(i) Describe the changes in antibody concentration that occur in the patient's blood during the primary response.

.....

.....

.....

.....

..... [3]

(ii) The patient was subsequently infected with the same pathogen 30 days after the initial infection.

Draw a line **on the graph** to show the likely concentration of antibodies in the patient's blood from 30 days onwards.

..... The answer to this question must be drawn on Fig. 7.1 [2]

QUESTION 7(c) STARTS ON PAGE 22

(c) Fig. 7.2 shows the structure of an antibody.

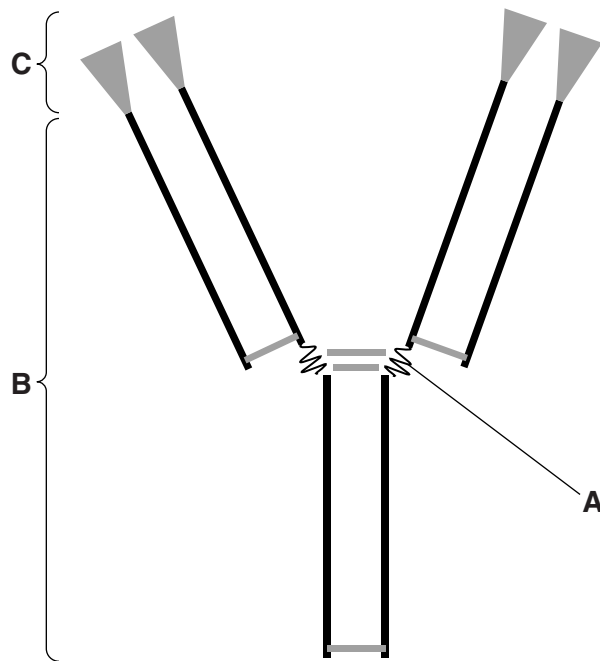


Fig. 7.2

Complete the table below by stating the name and function of each of the regions **A**, **B** and **C**.

region	name	function
A		
B		
C		

[6]

[Total: 16]

END OF QUESTION PAPER

ADDITIONAL PAGE

A series of horizontal dotted lines for writing, spanning most of the page width.



Copyright Information

OCR is committed to seeking permission to reproduce all third-party content that it uses in its assessment materials. OCR has attempted to identify and contact all copyright holders whose work is used in this paper. To avoid the issue of disclosure of answer-related information to candidates, all copyright acknowledgements are reproduced in the OCR Copyright Acknowledgements Booklet. This is produced for each series of examinations and is freely available to download from our public website (www.ocr.org.uk) after the live examination series.

If OCR has unwittingly failed to correctly acknowledge or clear any third-party content in this assessment material, OCR will be happy to correct its mistake at the earliest possible opportunity.

For queries or further information please contact the Copyright Team, First Floor, 9 Hills Road, Cambridge CB2 1GE.

OCR is part of the Cambridge Assessment Group; Cambridge Assessment is the brand name of University of Cambridge Local Examinations Syndicate (UCLES), which is itself a department of the University of Cambridge.