



## Mark Scheme (Provisional)

Summer 2021

Pearson Edexcel International Advanced Level  
In Chemistry (WCH14)  
Paper 01: Rates, Equilibria and Further Organic  
Chemistry

## **Edexcel and BTEC Qualifications**

Edexcel and BTEC qualifications are awarded by Pearson, the UK's largest awarding body. We provide a wide range of qualifications including academic, vocational, occupational and specific programmes for employers. For further information visit our qualifications websites at [www.edexcel.com](http://www.edexcel.com) or [www.btec.co.uk](http://www.btec.co.uk). Alternatively, you can get in touch with us using the details on our contact us page at [www.edexcel.com/contactus](http://www.edexcel.com/contactus).

## **Pearson: helping people progress, everywhere**

Pearson aspires to be the world's leading learning company. Our aim is to help everyone progress in their lives through education. We believe in every kind of learning, for all kinds of people, wherever they are in the world. We've been involved in education for over 150 years, and by working across 70 countries, in 100 languages, we have built an international reputation for our commitment to high standards and raising achievement through innovation in education. Find out more about how we can help you and your students at: [www.pearson.com/uk](http://www.pearson.com/uk)

Summer 2021

Question Paper Log Number P64626A

Publications Code WCH14\_01\_2106\_MS

All the material in this publication is copyright

© Pearson Education Ltd 2021

## General Marking Guidance

- All candidates must receive the same treatment. Examiners must mark the first candidate in exactly the same way as they mark the last.
- Mark schemes should be applied positively. Candidates must be rewarded for what they have shown they can do rather than penalised for omissions.
- Examiners should mark according to the mark scheme not according to their perception of where the grade boundaries may lie.
- There is no ceiling on achievement. All marks on the mark scheme should be used appropriately.
- All the marks on the mark scheme are designed to be awarded. Examiners should always award full marks if deserved, i.e. if the answer matches the mark scheme. Examiners should also be prepared to award zero marks if the candidate's response is not worthy of credit according to the mark scheme.
- Where some judgement is required, mark schemes will provide the principles by which marks will be awarded and exemplification may be limited.
- When examiners are in doubt regarding the application of the mark scheme to a candidate's response, the team leader must be consulted.
- Crossed out work should be marked UNLESS the candidate has replaced it with an alternative response.

## Using the Mark Scheme

Examiners should look for qualities to reward rather than faults to penalise. This does NOT mean giving credit for incorrect or inadequate answers, but it does mean allowing candidates to be rewarded for answers showing correct application of principles and knowledge. Examiners should therefore read carefully and consider every response: even if it is not what is expected it may be worthy of credit.

The mark scheme gives examiners:

- an idea of the types of response expected
- how individual marks are to be awarded
- the total mark for each question
- examples of responses that should NOT receive credit.

/ means that the responses are alternatives and either answer should receive full credit.

( ) means that a phrase/word is not essential for the award of the mark, but helps the examiner to get the sense of the expected answer.

Phrases/words in **bold** indicate that the meaning of the phrase or the actual word is **essential** to the answer.

ecf/TE/cq (error carried forward) means that a wrong answer given in an earlier part of a question is used correctly in answer to a later part of the same question.

Candidates must make their meaning clear to the examiner to gain the mark. Make sure that the answer makes sense. Do not give credit for correct words/phrases which are put together in a meaningless manner. Answers must be in the correct context.

### Quality of Written Communication

Questions which involve the writing of continuous prose will expect candidates to:

- write legibly, with accurate use of spelling, grammar and punctuation in order to make the meaning clear
- select and use a form and style of writing appropriate to purpose and to complex subject matter
- organise information clearly and coherently, using specialist vocabulary when appropriate.

Full marks will be awarded if the candidate has demonstrated the above abilities.

Questions where QWC is likely to be particularly important are indicated (QWC) in the mark scheme, but this does not preclude others.

Section A (multiple choice)

Question Number	Correct Answer	Mark
1	<p><b>The only correct answer is D (SO<sub>2</sub>)</b></p> <p><i>A is incorrect as although it has four atoms, it has ten electrons</i></p> <p><i>B is incorrect as it has two atoms and two electrons</i></p> <p><i>C is incorrect as it has two atoms and only fourteen electrons</i></p>	1

Question Number	Correct Answer	Mark
2	<p><b>The only correct answer is A (- 198.8)</b></p> <p><i>B is incorrect as number of moles of NH<sub>3</sub> and H<sub>2</sub> have not been considered</i></p> <p><i>C is incorrect as number of moles of NH<sub>3</sub> and H<sub>2</sub> have not been considered and the expression to find the standard entropy of the system is the wrong way round</i></p> <p><i>D is incorrect as expression to find the standard entropy of the system is the wrong way round</i></p>	1

Question Number	Correct Answer	Mark
3	<p><b>The only correct answer is C (enthalpy change of formation of Na<sub>2</sub>SO<sub>4</sub>)</b></p> <p><i>A is incorrect as lattice energy is used to find the enthalpy change of solution</i></p> <p><i>B is incorrect as enthalpy change of hydration is used to find the enthalpy change of solution</i></p> <p><i>D is incorrect as enthalpy change of hydration is used to find the enthalpy change of solution</i></p>	1

Question Number	Correct Answer	Mark
4 (a)	<p><b>The only correct answer is C</b> (<math>0.1 \text{ mol dm}^{-3} \text{ HCl}</math>)</p> <p><i>A is incorrect as final pH would be greater than 2 (weak acid)</i></p> <p><i>B is incorrect as final pH would be greater than 2 (weak acid)</i></p> <p><i>D is incorrect as final pH would be less than 1 (strong acid)</i></p>	1

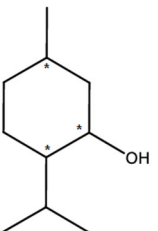
Question Number	Correct Answer	Mark
4 (b)	<p><b>The only correct answer is A</b> (<math>\text{NH}_3</math>)</p> <p><i>B is incorrect as strong base so vertical section would begin at a higher pH / curve has a buffer region</i></p> <p><i>C is incorrect as strong base so vertical section would begin at a higher pH / curve has a buffer region</i></p> <p><i>D is incorrect as strong base so vertical section would begin at a higher pH / curve has a buffer region</i></p>	1

Question Number	Correct Answer	Mark
4 (c)	<p><b>The only correct answer is C</b> (3)</p> <p><i>A is incorrect as only methyl orange, bromophenol blue and bromocresol green would change colour in the vertical section of the 'curve'</i></p> <p><i>B is incorrect as only methyl orange, bromophenol blue and bromocresol green would change colour in the vertical section of the 'curve'</i></p> <p><i>D is incorrect as methyl orange, bromophenol blue and bromocresol green would change colour in the vertical section of the 'curve'</i></p>	1

Question Number	Correct Answer	Mark
5	<p><b>The only correct answer is D</b> (<math>S_N1</math> ; Two steps in mechanism)</p> <p><i>A is incorrect as the halogenoalkane is tertiary so mechanism would be <math>S_N1</math> which has two steps</i></p> <p><i>B is incorrect as although the mechanism has two steps the halogenoalkane is tertiary so mechanism would be <math>S_N1</math></i></p> <p><i>C is incorrect as although the mechanism is <math>S_N1</math>, it would have two steps</i></p>	1

Question Number	Correct Answer	Mark
6	<p><b>The only correct answer is D</b> (Step 2 is the rate determining step, the overall order is 3)</p> <p><i>A is incorrect as Step 3 is fast</i></p> <p><i>B is incorrect as Step 3 is fast</i></p> <p><i>C is incorrect as the overall order is 3</i></p>	1

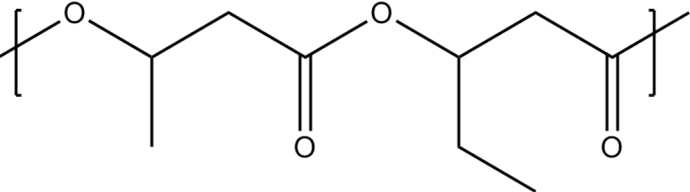
Question Number	Correct Answer	Mark
7	<p><b>The only correct answer is C</b> (<math>-\text{gradient} \times R</math>)</p> <p><i>A is incorrect the Arrhenius equation has been rearranged incorrectly</i></p> <p><i>B is incorrect as the gradient of the graph is negative, so this expression would give a negative value for an activation energy</i></p> <p><i>D is incorrect as the gradient of the graph is negative, so this expression would give a negative value for an activation energy</i></p>	1

Question Number	Correct Answer	Mark
8 (a)	<p>The only correct answer is C (3)</p>  <p><i>A is incorrect as menthol has 3 chiral carbon atoms</i>  <i>B is incorrect as menthol has 3 chiral carbon atoms</i>  <i>D is incorrect as menthol has 3 chiral carbon atoms</i></p>	1

Question Number	Correct Answer	Mark
8 (b)	<p>The only correct answer is B (Q)</p> <p><i>A is incorrect as this carbon would produce a peak between 0 and 60 ppm</i>  <i>C is incorrect as this carbon would produce a peak between 0 and 60 ppm</i>  <i>D is incorrect as this carbon would produce a peak between 0 and 60 ppm</i></p>	1



Question Number	Correct Answer	Mark
8 (c)	<p><b>The only correct answer is B (Two)</b></p> <p><i>A is incorrect as the oxidation product is a ketone, so would not react with <math>PCl_5</math></i></p> <p><i>C is incorrect as the oxidation product is a ketone, so would not react with Fehling's solution</i></p> <p><i>D is incorrect as the oxidation product is a ketone, so would not react with <math>PCl_5</math> but would react with 2,4-dinitrophenylhydrazine</i></p>	1

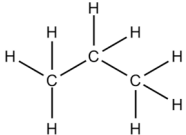
Question Number	Correct Answer	Mark
9 (a)	<p><b>The only correct answer is B</b></p>  <p><i>A is incorrect as the repeat unit has an extra oxygen</i></p> <p><i>C is incorrect as there is an extra carbon at the left-hand end of the repeat unit</i></p> <p><i>D is incorrect as the repeat unit has an extra oxygen and the structure is incorrect</i></p>	1

Question Number	Correct Answer	Mark
9 (b)	<p><b>The only correct answer is B (hydrolysis)</b></p> <p><i>A is incorrect as condensation is the reaction when the polymer forms</i></p> <p><i>C is incorrect as hydration is the addition of water to a C=C bond</i></p> <p><i>D is incorrect as hydrogen has not been added in a reduction reaction</i></p>	1

Question Number	Correct Answer	Mark
10	<p><b>The only correct answer is D (CH<sub>3</sub>COCl )</b></p> <p><i>A is incorrect as the reaction with ketone would NOT form an N-substituted amide</i></p> <p><i>B is incorrect as any reaction with the carboxylic acid would be too slow at RT</i></p> <p><i>C is incorrect as any reaction with the ester would be too slow at RT</i></p>	1

Question Number	Correct Answer	Mark
11(a)	<p><b>The only correct answer is B (68 mm)</b></p> <p><i>A is incorrect as it is a factor of 10 too large</i></p> <p><i>C is incorrect as it is the distance moved by the amino acids</i></p> <p><i>D is incorrect as it is the expression for R<sub>f</sub> has been inverted</i></p>	1

Question Number	Correct Answer	Mark
11 (b)	<p>The only correct answer is <b>A</b> (argon)</p> <p><i>B is incorrect as the carrier gas must be inert</i></p> <p><i>C is incorrect as the carrier gas must be inert</i></p> <p><i>D is incorrect as the carrier gas must be inert</i></p>	1

Question Number	Correct Answer	Mark
12	<p>The only correct answer is <b>C</b></p> <div style="text-align: center;">  </div> <p><i>A is incorrect as the molar mass to 4 dp is 44.0265</i></p> <p><i>B is incorrect as the molar mass to 4 dp is 44.0265</i></p> <p><i>D is incorrect as the molar mass to 4 dp is 43.9898</i></p>	1

Question Number	Correct Answer	Mark
13	<p><b>The only correct answer is D (8)</b></p> <p><i>A is incorrect as the number of optical isomers = <math>2^n</math>, where <math>n</math> = number of chiral centres</i></p> <p><i>B is incorrect as the number of optical isomers = <math>2^n</math>, where <math>n</math> = number of chiral centres</i></p> <p><i>C is incorrect as the number of optical isomers = <math>2^n</math>, where <math>n</math> = number of chiral centres</i></p>	1

Question Number	Correct Answer	Mark
14	<p><b>The only correct answer is D (Structure D)</b></p> <p><i>A is incorrect as it is identical to B and C</i></p> <p><i>B is incorrect as it is identical to A and C</i></p> <p><i>C is incorrect as it is identical to A and B</i></p>	1

**(Total for Section A = 20 marks)**

## Section B

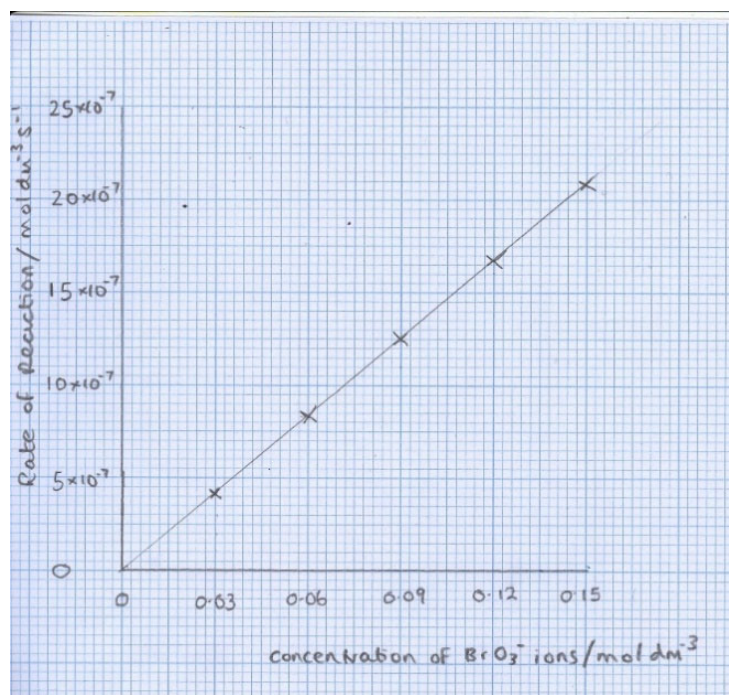
Question Number	Acceptable Answers	Additional Guidance	Mark
15 (a)	<ul style="list-style-type: none"> <li>• correct expression for <math>\Delta S_{\text{surroundings}}</math> (1)</li> <li>• correct evaluation <b>and</b> correct units <b>and</b> correct sign (1)</li> </ul>	<p><u>Example of calculation</u>  <math>-\Delta H \circ T = -25.7 \circ 298</math></p> <p><math>-0.086242 \text{ kJ K}^{-1} \text{ mol}^{-1} /</math>  <math>-86.242 \text{ J K}^{-1} \text{ mol}^{-1}</math></p> <p>Ignore SF except 1 SF  Correct answer with no working scores (2)</p> <p>Allow TE in M2 for use of <math>\Delta H \circ T</math></p> <p>Comment</p> <p>Mark value first – if correct, with units and sign award 2 marks  For units allow <math>\text{kJ K}^{-1} \text{ mol}^{-1} / \text{J K}^{-1} \text{ mol}^{-1}</math></p>	2

Question Number	Acceptable Answers	Additional Guidance	Mark
15(b)	<p>An explanation that makes reference to:</p> <ul style="list-style-type: none"> <li>• <math>\Delta S_{\text{system}}</math> must be positive (1)</li> <li>• <math>\Delta S_{\text{system}} &gt; 86.24 \text{ J mol}^{-1}</math> / answer to (a) (1)</li> <li>• (as compound does dissolve) <math>\Delta S_{\text{total}}</math> is <math>&gt; 0</math> / positive (1)</li> </ul>	<p>Allow '<math>\Delta S_{\text{system}}</math> is more positive'</p> <p>Allow <math>T\Delta S_{\text{system}}</math> is greater in magnitude / more negative than <math>\Delta H</math></p> <p><math>\Delta G</math> is negative</p> <p>If answer to (a) is positive , then M1 and M2 will be</p> <ul style="list-style-type: none"> <li>• <math>\Delta S_{\text{system}}</math> could be positive or negative</li> <li>• <math>\Delta S_{\text{system}}</math> smaller in magnitude than answer to (a) / <math>T\Delta S_{\text{system}}</math> is greater than <math>\Delta H</math></li> </ul>	3

**(Total for Question 15 = 5 marks)**

Question Number	Acceptable Answers	Additional Guidance	Mark
16(a)(i)	<ul style="list-style-type: none"> <li>rate against concentration graph with axes labelled, inc. units</li> <li>suitable scale chosen including the origin</li> <li>all points plotted correctly and straight line of best fit.</li> </ul>	<p>(1) Do not award M1 if axes are the other way around</p> <p>(1) Points cover at least half available space in both directions</p> <p>(1) Allow <math>\pm\frac{1}{2}</math> a square</p> <p>Allow if line does not extend to the origin Do not award M3 if scale is non-linear</p>	3

Allow  $[\text{BrO}_3^-] / \text{mol dm}^{-3}$   
Ignore 'initial'



Question Number	Acceptable Answers	Additional Guidance	Mark
16(a)(ii)	<ul style="list-style-type: none"> <li>justification of first order</li> </ul>	(First order with respect to $\text{BrO}_3^-$ ) as straight line (through origin / 0,0)  Allow line with constant gradient  Allow rate is (directly) proportional to concentration  Allow use of data from graph to justify order  Do not award 'constant half life'	1

Question Number	Acceptable Answers	Additional Guidance	Mark
16(b)(i)	<ul style="list-style-type: none"> <li>deduce order wrt <math>\text{Br}^-</math> ions (1)</li> <li>deduce order wrt <math>\text{H}^+</math> ions (1)</li> </ul>	1 <sup>st</sup> order  2 <sup>nd</sup> order	2



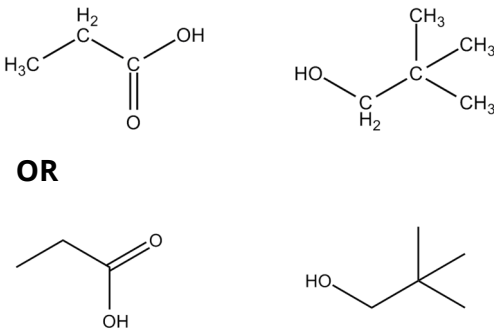
Question Number	Acceptable Answers	Additional Guidance	Mark
16(b)(ii)	<ul style="list-style-type: none"> <li>rate equation shown</li> </ul>	$\text{rate} = k[\text{BrO}_3^-][\text{Br}^-][\text{H}^+]^2$  Allow TE from (b)(i)	1

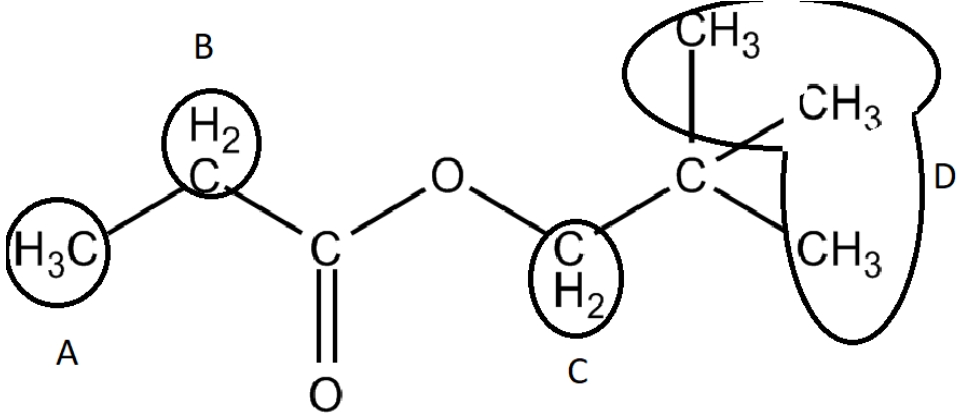
Question Number	Acceptable Answers	Additional Guidance	Mark
16(b)(iii)	<ul style="list-style-type: none"> <li>rearrangement of rate equation</li> <li>evaluation of <math>k</math></li> <li>units for <math>k</math></li> </ul>	<p><u>Example of calculation</u></p> $k = \text{rate}/[\text{BrO}_3^-][\text{Br}^-][\text{H}^+]^2 /$ $k = 1.52 \times 10^{-5} / (0.062 \times 0.21 \times 0.4^2)$ <p>(1)</p> <p>(1) <math>7.2965 \times 10^{-3}</math> ignore SF except 1SF M1 can be subsumed within award of M2</p> <p>(1) <math>\text{dm}^9 \text{mol}^{-3} \text{s}^{-1}</math> allow in any order Correct answer with no working scores (3)</p> <p>TE on (b)(ii)</p> <p>Allow use of data from Run 2 or Run 3</p>	3

Question Number	Acceptable Answers	Additional Guidance	Mark
16(c)	<p>An answer that makes reference to:</p> <ul style="list-style-type: none"> <li>• reactants <b>adsorb</b> onto palladium/catalyst surface <span style="float: right;"><b>(1)</b></span></li>   <li>• this weakens bonds in reactants <span style="float: right;"><b>(1)</b></span></li>   <li>• products then desorb (from catalyst surface) <span style="float: right;"><b>(1)</b></span></li> </ul>	<p>Allow bromate ((V)) ions for reactants</p> <p>Allow 'bond/bind onto catalyst surface' Do not award <b>absorb</b></p> <p>Ignore comments related to orientation</p> <p>Allow 'products de-adsorb' / products released (from catalyst surface)</p> <p>If no other mark is awarded allow one for: reaction follows an alternative pathway / route / mechanism of lower activation energy</p>	<b>3</b>

**(Total for Question 16 = 13 marks)**

Question Number	Acceptable Answers	Additional Guidance	Mark												
17(a)	<ul style="list-style-type: none"> <li>• calculation of moles of C, H and O <b>(1)</b></li>   <li>• calculation of ratio <b>and</b> identify that ratio matches molecular formula <b>(1)</b></li> </ul> <p style="text-align: center;">OR</p> <ul style="list-style-type: none"> <li>• calculate molar mass of <b>Y</b> <b>(1)</b></li>   <li>• calculate % of each element <b>(1)</b></li> </ul>	<table border="1" style="width: 100%; border-collapse: collapse; text-align: center;"> <thead> <tr> <th style="width: 25%;">element</th> <th style="width: 25%;">moles</th> <th style="width: 25%;">ratio</th> </tr> </thead> <tbody> <tr> <td>C</td> <td><math>\frac{66.7}{12}</math> =5.56</td> <td><math>\frac{5.56}{1.3875}</math> = 4</td> </tr> <tr> <td>H</td> <td><math>\frac{11.1}{1}</math> = 11.1</td> <td><math>\frac{11.1}{1.3875}</math> = 8</td> </tr> <tr> <td>O</td> <td><math>\frac{22.2}{16}</math> =1.3875</td> <td><math>\frac{1.3875}{1.3875}</math> = 1</td> </tr> </tbody> </table> <p>Ratio <math>C_4H_8O</math> matches <math>C_8H_{16}O_2</math></p> <p>Molar mass = <math>144 \text{ g mol}^{-1}</math></p> <p><math>C = \frac{96}{144} \times 100 = 66.7\%</math>  <math>H = \frac{16}{144} \times 100 = 11.1\%</math>  <math>O = \frac{32}{144} \times 100 = 22.2\%</math></p>	element	moles	ratio	C	$\frac{66.7}{12}$ =5.56	$\frac{5.56}{1.3875}$ = 4	H	$\frac{11.1}{1}$ = 11.1	$\frac{11.1}{1.3875}$ = 8	O	$\frac{22.2}{16}$ =1.3875	$\frac{1.3875}{1.3875}$ = 1	<b>2</b>
element	moles	ratio													
C	$\frac{66.7}{12}$ =5.56	$\frac{5.56}{1.3875}$ = 4													
H	$\frac{11.1}{1}$ = 11.1	$\frac{11.1}{1.3875}$ = 8													
O	$\frac{22.2}{16}$ =1.3875	$\frac{1.3875}{1.3875}$ = 1													

Question Number	Acceptable Answers	Additional Guidance	Mark
17(b)(i)	2,2-dimethylpropyl propanoate <span style="float: right;"><b>(2)</b></span>	Any name with '-propyl propanoate' scores 1  propyl-2,2-dimethyl propanoate scores 1 2,2-dimethylpropylethanoate scores 1	<b>2</b>
Question Number	Acceptable Answers	Additional Guidance	Mark
17(b)(ii)	 <p style="text-align: center;"><b>OR</b></p>	Both structures required for mark  Allow structures of propanoyl chloride / propanoic anhydride  Allow any combination of correct skeletal, structural or displayed formulae.  Ignore names even if incorrect Do not award connectivity to hydroxyl group via H atom	<b>1</b>

Question Number	Acceptable Answers	Additional Guidance	Mark
17(c)(i)	 <p>The diagram shows the chemical structure of methyl propyl acetate, <math>\text{CH}_3\text{CH}_2\text{COOCH}_2\text{CH}_2\text{CH}_3</math>. The structure is annotated with labels for proton environments: <ul style="list-style-type: none"> <li><b>A:</b> A circle around the methyl group (<math>\text{H}_3\text{C}</math>) of the propyl chain.</li> <li><b>B:</b> A circle around the methylene group (<math>\text{H}_2</math>) of the propyl chain.</li> <li><b>C:</b> A circle around the methylene group (<math>\text{H}_2</math>) of the acetate chain.</li> <li><b>D:</b> A large oval encompassing all three methyl groups (<math>\text{CH}_3</math>) of the acetate chain.</li> </ul> </p>	<p>Labels B C and D can be used interchangeably as long as the three proton environments are identified correctly.</p> <p>Allow 3 methyl groups to be circled individually but with a single label / labels pointing to all 3</p>	1

Question Number	Acceptable Answers			Additional Guidance	Mark															
17(c)(ii)	<table border="1" data-bbox="432 316 1305 703"> <thead> <tr> <th data-bbox="432 316 741 432">Hydrogen environment</th> <th data-bbox="741 316 987 432">Splitting pattern of peak</th> <th data-bbox="987 316 1305 432">Relative peak area</th> </tr> </thead> <tbody> <tr> <td data-bbox="432 432 741 499">(A)</td> <td data-bbox="741 432 987 499">(triplet)</td> <td data-bbox="987 432 1305 499">(3)</td> </tr> <tr> <td data-bbox="432 499 741 566">B</td> <td data-bbox="741 499 987 566">quartet</td> <td data-bbox="987 499 1305 566">2</td> </tr> <tr> <td data-bbox="432 566 741 633">C</td> <td data-bbox="741 566 987 633">singlet</td> <td data-bbox="987 566 1305 633">2</td> </tr> <tr> <td data-bbox="432 633 741 703">D</td> <td data-bbox="741 633 987 703">singlet</td> <td data-bbox="987 633 1305 703">9</td> </tr> </tbody> </table> <p data-bbox="432 730 1196 810">Note : allow 'quadruplet' as alternative for quartet / 'single' as alternative for singlet</p> <p data-bbox="432 842 779 879">Do not award 'quadrat'</p>			Hydrogen environment	Splitting pattern of peak	Relative peak area	(A)	(triplet)	(3)	B	quartet	2	C	singlet	2	D	singlet	9	<p data-bbox="1408 300 1697 331">1 mark for each row.</p> <p data-bbox="1408 379 1794 616">But If two or more rows are incorrect then award whichever of these alternatives is higher Allow 2 marks for 3 correct splitting patterns.</p> <p data-bbox="1408 624 1458 655">OR</p> <p data-bbox="1408 663 1771 730">Allow 1 mark for 3 correct peak areas.</p> <p data-bbox="1408 738 1458 770">OR</p> <p data-bbox="1408 778 1805 810">Allow 1 mark for correct row</p> <p data-bbox="1408 858 1787 932">marked consequentially on the labelling in 17(c)(i)</p>	3
Hydrogen environment	Splitting pattern of peak	Relative peak area																		
(A)	(triplet)	(3)																		
B	quartet	2																		
C	singlet	2																		
D	singlet	9																		

**(Total for Question 17 = 9 marks)**

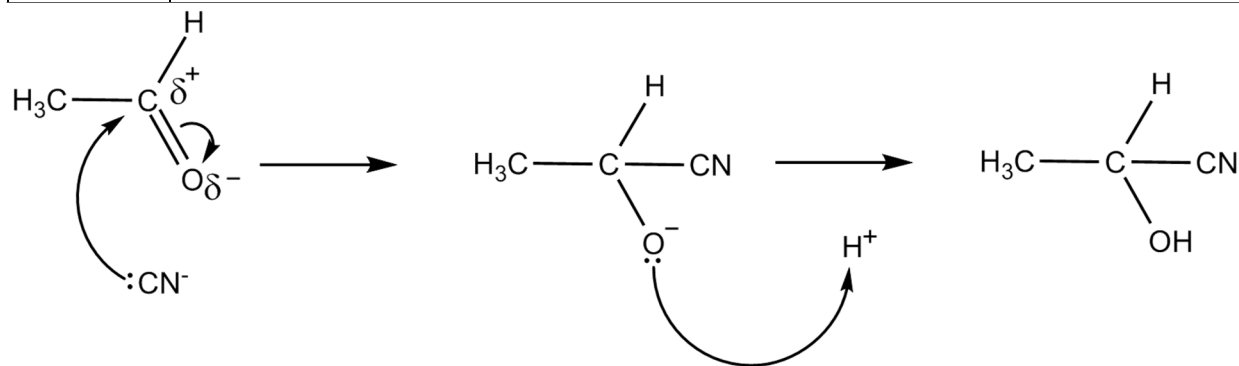
Question Number	Acceptable Answers	Additional Guidance	Mark																				
18	<p>This question assesses the student's ability to show a coherent and logically structured answer with linkages and fully sustained reasoning.</p> <p>Marks are awarded for indicative content and for how the answer is structured and shows lines of reasoning.</p> <p>The following table shows how the marks should be awarded for indicative content.</p> <table border="1" data-bbox="376 587 1120 826"> <thead> <tr> <th>Number of indicative marking points seen in answer</th> <th>Number of marks awarded for indicative marking points</th> </tr> </thead> <tbody> <tr> <td>6</td> <td>4</td> </tr> <tr> <td>5-4</td> <td>3</td> </tr> <tr> <td>3-2</td> <td>2</td> </tr> <tr> <td>1</td> <td>1</td> </tr> <tr> <td>0</td> <td>0</td> </tr> </tbody> </table> <p>The following table shows how the marks should be awarded for structure and lines of reasoning</p> <table border="1" data-bbox="376 927 1120 1326"> <thead> <tr> <th></th> <th>Number of marks awarded for structure of answer and sustained lines of reasoning</th> </tr> </thead> <tbody> <tr> <td>Answer shows a coherent logical structure with linkages and fully sustained lines of reasoning demonstrated throughout</td> <td>2</td> </tr> <tr> <td>Answer is partially structured with some linkages and lines of reasoning</td> <td>1</td> </tr> <tr> <td>Answer has no linkages between points and is unstructured</td> <td>0</td> </tr> </tbody> </table>	Number of indicative marking points seen in answer	Number of marks awarded for indicative marking points	6	4	5-4	3	3-2	2	1	1	0	0		Number of marks awarded for structure of answer and sustained lines of reasoning	Answer shows a coherent logical structure with linkages and fully sustained lines of reasoning demonstrated throughout	2	Answer is partially structured with some linkages and lines of reasoning	1	Answer has no linkages between points and is unstructured	0	<p>Guidance on how the mark scheme should be applied: The mark for indicative content should be added to the mark for lines of reasoning. For example, a response with four indicative marking points that is partially structured with some linkages and lines of reasoning scores 4 marks (3 marks for indicative content and 1 mark for partial structure and some linkages and lines of reasoning). If there were no linkages between the points, then the same indicative marking points would yield an overall score of 3 marks (3 marks for indicative content and zero marks for linkages).</p>	
Number of indicative marking points seen in answer	Number of marks awarded for indicative marking points																						
6	4																						
5-4	3																						
3-2	2																						
1	1																						
0	0																						
	Number of marks awarded for structure of answer and sustained lines of reasoning																						
Answer shows a coherent logical structure with linkages and fully sustained lines of reasoning demonstrated throughout	2																						
Answer is partially structured with some linkages and lines of reasoning	1																						
Answer has no linkages between points and is unstructured	0																						

	<p>Indicative Points</p> <ul style="list-style-type: none"> <li>• <b>IP1</b> Bonding in sodium chloride is (almost) 100% ionic bonds <b>and</b> as the theoretical and Born-Haber values are (very) similar</li> <li>• <b>IP2</b> Bonding in magnesium iodide has some covalent character <b>and</b> as theoretical and Born-Haber values are (significantly) different</li> <li>• <b>IP3</b> Anion is (more) polarised in magnesium iodide (than sodium chloride)</li> <li>• <b>IP4</b> Magnesium ion has a greater charge density (than sodium ion), so greater polarising power</li> <li>• <b>IP5</b> Iodide ion is larger (than chloride ion), so is more easily polarised</li> <li>• <b>IP6</b> Magnesium iodide has stronger bonding than sodium chloride because the charge on the magnesium ion is twice as large (as the charge on the sodium ion)</li> </ul>	<p>If neither IP1 or IP2 scored can get 1IP for Bonding in sodium chloride is (almost) 100% ionic bonds and bonding in magnesium iodide has some covalent character</p> <p>ALLOW Magnesium ion has a greater charge/smaller than sodium ion, so greater polarising power</p> <p>polarisation must be mentioned at least once in IP3, IP4 and IP5          Penalise use of 'atoms' instead of ions once only in IP3 IP4 and IP5          Penalise lack of comparative language once only in IP4, IP5 and IP6          Allow magnesium iodide has stronger bonding (than expected) due to polarisation / covalent character          Allow both compounds have strong bonds as large amounts of energy needed to break up lattice / released when lattice forms / needed to break many strong bonds</p>	
--	--	---	--

(Total for Question 18 = 6 marks)



Question Number	Acceptable Answers	Additional Guidance	Mark
19(a)(i)	<ul style="list-style-type: none"> <li>arrow from lone pair on carbon of cyanide ion to carbonyl carbon <b>(1)</b></li> <li>dipoles on carbon and oxygen in carbonyl bond <b>and</b> arrow from carbonyl bond to oxygen or just beyond <b>(1)</b></li> <li>structure of intermediate, including charge <b>(1)</b></li> <li>arrow from lone pair of oxygen in intermediate to hydrogen ion / H in HCN <b>(1)</b></li> </ul>	Penalise absence of lone pair only once in M1, M3 and M4  If HCN used to protonate in step 2, dipole on HCN and curly arrow to break HCN bond are <b>not</b> required Ignore product	4



Question Number	Acceptable Answers	Additional Guidance	Mark
19(a)(ii)	<p>The prediction is incorrect because</p> <ul style="list-style-type: none"> <li>• ethanal is planar around the carbonyl carbon atom / planar around the CHO <b>(1)</b></li>   <li>• (so in Step 1) the (carbonyl) carbon can be attacked from above or below <b>(1)</b></li>   <li>• hence both stereoisomers (of intermediate / product) will form in equal amounts <b>or</b> so product mixture is racemic / rotates the plane of plane-polarised light equally in both directions <b>(1)</b></li> </ul>	<p>Accept planar at the site of the nucleophilic attack / planar about C=O</p> <p>Do not award planar molecule / cation / intermediate</p> <p>Allow attack from any direction / either side</p> <p>Ignore 'has no effect on the plane of plane-polarised light'</p> <p>Ignore comments related to SN1 or SN2</p> <p>If no other mark scored allow 1 mark for idea that product will rotate plane of plane polarised light as it has a chiral centre / carbon</p>	<b>3</b>

Question Number	Acceptable Answers	Additional Guidance	Mark
19(a)(iii)	<ul style="list-style-type: none"> <li>• hydrolysis (1)</li> <li>• (dilute) hydrochloric acid / HCl(aq) (1)</li> <li>• heat (under reflux) / reflux (1)</li> <li>• <math>\text{CH}_3\text{CH}(\text{OH})\text{CN} + 2\text{H}_2\text{O} + \text{H}^+ \rightarrow \text{CH}_3\text{CH}(\text{OH})\text{COOH} + \text{NH}_4^+</math> (1)</li> </ul> <p>OR</p> $\text{CH}_3\text{CH}(\text{OH})\text{CN} + 2\text{H}_2\text{O} \rightarrow \text{CH}_3\text{CH}(\text{OH})\text{COOH} + \text{NH}_3$ <p>OR</p> $\text{CH}_3\text{CH}(\text{OH})\text{CN} + 2\text{H}_2\text{O} + \text{HCl} \rightarrow \text{CH}_3\text{CH}(\text{OH})\text{COOH} + \text{NH}_4\text{Cl}$ <p>OR</p> $\text{CH}_3\text{CH}(\text{OH})\text{CN} + \text{H}_2\text{O} + \text{OH}^- \rightarrow \text{CH}_3\text{CH}(\text{OH})\text{COO}^- + \text{NH}_3$ <p><b>and</b></p> $\text{CH}_3\text{CH}(\text{OH})\text{COO}^- + \text{H}^+ \rightarrow \text{CH}_3\text{CH}(\text{OH})\text{COOH}$	<p>Allow any strong acid by name or formula</p> <p>Allow sodium hydroxide <b>followed by</b> any (strong) acid</p> <p>Ignore conc / concentrated</p> <p>Allow 'boil' for heat</p> <p>Allow NaOH for <math>\text{OH}^-</math></p> <p>Allow HCl for <math>\text{H}^+</math></p> <p>Ignore state symbols even if incorrect</p>	<b>4</b>

Question Number	Acceptable Answers	Additional Guidance	Mark
19(b)	<ul style="list-style-type: none"> <li>• <math>\text{CH}_3\text{CH}(\text{OH})\text{COOH} + \text{NaHCO}_3 \rightarrow \text{CH}_3\text{CH}(\text{OH})\text{COO}^-\text{Na}^+ + \text{H}_2\text{O} + \text{CO}_2</math></li> </ul> <p style="margin-left: 40px;">OR</p> <p style="margin-left: 40px;"><math>\text{H}^+ + \text{HCO}_3^- \rightarrow \text{H}_2\text{O} + \text{CO}_2</math></p>	<p>Allow <math>\text{CH}_3\text{CH}(\text{OH})\text{COONa}</math> Allow <math>\text{H}_2\text{CO}_3</math></p> <p>Ignore state symbols even if incorrect Do not award if covalent bond shown between O and Na</p>	<b>1</b>

Question Number	Acceptable Answers	Additional Guidance	Mark
19(c)(i)	<ul style="list-style-type: none"> <li data-bbox="421 280 1339 320">• (large concentration of) <math>\text{HCO}_3^-</math> react with (extra) <math>\text{H}^+</math> ions <b>(1)</b></li>   <li data-bbox="421 400 1339 520">• equilibrium 1 moves to the RHS to keep concentration of <math>\text{H}^+</math> ions constant / <math>\text{H}_2\text{CO}_3</math> forms to keep concentration of <math>\text{H}^+</math> ions constant <b>(1)</b></li>   <li data-bbox="421 679 1339 759">• equilibrium 2 moves to RHS to form <math>\text{CO}_2</math> (which can be excreted from the body) / <math>\text{H}_2\text{CO}_3</math> then forms <math>\text{CO}_2</math> (and water) <b>(1)</b></li> </ul>	<p data-bbox="1370 280 1859 392">Allow ratio of <math>[\text{HCO}_3^-]</math> to <math>[\text{H}_2\text{CO}_3]</math> remains constant / ratio of [salt] to [acid] remains constant</p> <p data-bbox="1370 440 1859 632">Allow <math>\text{H}_3\text{O}^+</math> for <math>\text{H}^+</math> Allow equilibrium 1 moves to the RHS to remove excess <math>\text{H}^+</math> ions / <math>\text{H}_2\text{CO}_3</math> forms to remove excess <math>\text{H}^+</math> ions</p> <p data-bbox="1370 679 1859 831">If no reference to <math>\text{H}^+</math> and <math>\text{CO}_2</math> in M2 and M3 but direction of movement of equilibria are correct in both cases, allow 1 mark</p>	<b>3</b>

Question Number	Acceptable Answers	Additional Guidance	Mark
19(c)(ii)	<ul style="list-style-type: none"> <li>• calculation of <math>[H^+] / [H_3O^+]</math> (1)</li> <li>• <math>K_a</math> expression (1)</li>   <li>• rearrangement of <math>K_a</math> expression and calculation of <math>[HCO_3^-] : [H_2CO_3]</math> (1)</li> </ul> <p style="text-align: center;">OR</p> <ul style="list-style-type: none"> <li>• calculation of <math>pK_a</math> (1)</li> <li>• Henderson Hasselbach expression (1)</li> <li>• rearrangement of <math>K_a</math> expression and calculation of <math>[HCO_3^-] : [H_2CO_3]</math> (1)</li> </ul>	<p><math>[H^+] = 10^{-7.41} / = 3.8905 \times 10^{-8}</math></p> <p><math>K_a = \frac{[HCO_3^-][H^+]}{[H_2CO_3]}</math> Allow <math>[H_3O^+]</math> in <math>K_a</math></p> <p>Do not award <math>[H_2O]</math> in <math>K_a</math> expression</p> <p><math>[HCO_3^-] : [H_2CO_3]</math>  <math>= 4.5 \times 10^{-7} \div 3.8905 \times 10^{-8} = 11.567 : 1 = 11.6 (: 1)</math>  Ignore SF except 1  Allow correct rounding of <math>[H^+]</math> to <math>3.9 \times 10^{-8}</math>  Allow <math>1 : 0.086444</math> if it's clear that 1 relates to <math>[HCO_3^-]</math></p> <p><math>pK_a = -\log 4.5 \times 10^{-7} = 6.3468</math></p> <p><math>pH = pK_a + \log([HCO_3^-] \circ [H_2CO_3])</math></p> <p><math>7.41 - 6.3468 = \log([HCO_3^-] \circ [H_2CO_3])</math>  <math>[HCO_3^-] : [H_2CO_3] = 11.567 (: 1)</math>  Correct answer with no working scores (3)  If final answer close, check for and allow correct rounding</p>	<b>3</b>

(Total for Question 19 = 18 marks)  
(Total for Section B = 51 marks)

Question Number	Acceptable Answers	Additional Guidance	Mark
20(a)(i)	<p>When the pressure is increased</p> <ul style="list-style-type: none"> <li>equilibrium moves to RHS and yield (of chlorine) increases <b>(1)</b></li> <li>as fewer gas molecules on the RHS (5:4) <b>(1)</b></li> <li><math>K_p</math> remains constant <b>(1)</b></li> </ul>	<p>Marking points are independent</p> <p>Allow 'backward reaction favoured so yield (of chlorine) increases'</p> <p>If numbers are given they must be correct</p> <p>Allow 'change in pressure has no effect on value for <math>K_p</math>'</p>	<b>3</b>

Question Number	Acceptable Answers	Additional Guidance	Mark
20(a)(ii)	<p>When the temperature increases</p> <ul style="list-style-type: none"> <li>equilibrium moves to LHS as (forward) reaction is exothermic <b>(1)</b></li> <li><math>K_p</math> decreases and so yield (of chlorine) decreases <b>(1)</b></li> </ul>	<p>Marking points are independent</p> <p>Allow reaction moves in endothermic direction</p>	<b>2</b>

Question Number	Acceptable Answers	Additional Guidance	Mark
20(a)(iii)	When a catalyst is used <ul style="list-style-type: none"> <li>rate of backward and forward reactions increases by same amount (1)</li> <li>so <math>K_p</math> <b>and</b> yield (of chlorine) is unchanged (1)</li> </ul>		2

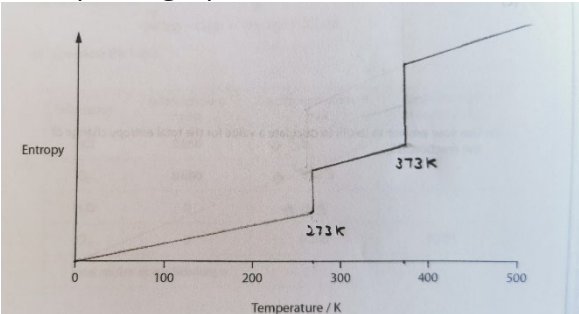
Question Number	Acceptable Answers	Additional Guidance	Mark																								
20(b)(i)	<table border="1" style="margin-left: auto; margin-right: auto;"> <thead> <tr> <th>Substance</th> <th>Initial amount / mol</th> <th>Equilibrium amount / mol</th> <th>Mole fraction at equilibrium</th> </tr> </thead> <tbody> <tr> <td>HCl</td> <td>0.850</td> <td><b>0.350</b></td> <td><b>0.26415</b></td> </tr> <tr> <td>O<sub>2</sub></td> <td>0.600</td> <td><b>0.475</b></td> <td><b>0.35849</b></td> </tr> <tr> <td>H<sub>2</sub>O</td> <td>0</td> <td><b>0.250</b></td> <td><b>0.18868</b></td> </tr> <tr> <td>Cl<sub>2</sub></td> <td>0</td> <td>0.250</td> <td>0.189</td> </tr> <tr> <td colspan="4" style="text-align: center;">Total moles at equilibrium = <b>1.325</b></td> </tr> </tbody> </table> <p>All values correct scores (3)</p> <p>M1 1 correct equilibrium amount (1)</p> <p>M2 other 2 correct equilibrium amounts (1)</p> <p>M3 Consequential total moles and mol fraction (1)</p>	Substance	Initial amount / mol	Equilibrium amount / mol	Mole fraction at equilibrium	HCl	0.850	<b>0.350</b>	<b>0.26415</b>	O <sub>2</sub>	0.600	<b>0.475</b>	<b>0.35849</b>	H <sub>2</sub> O	0	<b>0.250</b>	<b>0.18868</b>	Cl <sub>2</sub>	0	0.250	0.189	Total moles at equilibrium = <b>1.325</b>				<p>For mole fractions allow e.g. 0.350 o1.325</p> <p>allow correct rounding</p> <p>Ignore SF except 1 SF</p>	3
Substance	Initial amount / mol	Equilibrium amount / mol	Mole fraction at equilibrium																								
HCl	0.850	<b>0.350</b>	<b>0.26415</b>																								
O <sub>2</sub>	0.600	<b>0.475</b>	<b>0.35849</b>																								
H <sub>2</sub> O	0	<b>0.250</b>	<b>0.18868</b>																								
Cl <sub>2</sub>	0	0.250	0.189																								
Total moles at equilibrium = <b>1.325</b>																											



Question Number	Acceptable Answers	Additional Guidance	Mark
20(b)(ii)	$K_p = p(\text{H}_2\text{O})^2 p(\text{Cl}_2)^2 \circ p(\text{HCl})^4 p(\text{O}_2)$	Ignore parentheses  Do not award square brackets	1

Question Number	Acceptable Answers	Additional Guidance	Mark										
20(b)(iii)	<ul style="list-style-type: none"> <li>mole fractions converted to partial pressure (1)</li> <li>final value for <math>K_p</math> given to 2 or 3SF (1)</li> <li>correct units given (1)</li> </ul>	<p>Example of calculation allow TE from 20b(i)</p> <table border="1"> <thead> <tr> <th>substance</th> <th>pp</th> </tr> </thead> <tbody> <tr> <td>HCl</td> <td>0.39623</td> </tr> <tr> <td>O<sub>2</sub></td> <td>0.53774</td> </tr> <tr> <td>H<sub>2</sub>O</td> <td>0.28302</td> </tr> <tr> <td>Cl<sub>2</sub></td> <td>0.28302</td> </tr> </tbody> </table> <p>Allow e.g. for pp(HCl); 0.26415 x 1.5</p> $\frac{(0.28302)^2(0.28302)^2}{(0.39623)^4(0.53770)}$ <p>= 0.48407 (Note = 0.48408 if no rounding) = 0.48 / 0.484 No TE for M2 for incorrect expression</p> <p>Check final answer if close, and allow if correct rounding used in working</p> <p>atm<sup>-1</sup> allow TE for M3 from incorrect expression in (b)(ii)</p>	substance	pp	HCl	0.39623	O <sub>2</sub>	0.53774	H <sub>2</sub> O	0.28302	Cl <sub>2</sub>	0.28302	3
substance	pp												
HCl	0.39623												
O <sub>2</sub>	0.53774												
H <sub>2</sub> O	0.28302												
Cl <sub>2</sub>	0.28302												

Question Number	Acceptable Answers	Additional Guidance	Mark
20(b)(iv)	<ul style="list-style-type: none"> <li data-bbox="488 300 1256 336">• recall of expression for <math>\Delta S_{\text{total}}</math> (1)</li> <li data-bbox="488 379 1256 416">• calculation of <math>\Delta S_{\text{total}}</math> (1)</li> </ul>	$\Delta S_{\text{total}} = R \ln K$ $= 8.31 \times -0.726$ $= -6.033 \text{ (J K}^{-1} \text{ mol}^{-1}\text{)}$ <p>Allow TE / rounded value from (iii)</p> <p>No TE for M2 from incorrect expression</p> <p>Ignore SF except 1 SF Ignore units even if incorrect</p> <p>NOTE <math>\Delta S_{\text{total}} = -6.0289</math> if no rounding from (b)(iii)  <math>\Delta S_{\text{total}} = -6.0993</math> if 0.48 used from b(iii)</p>	<b>2</b>

Question Number	Acceptable Answers	Additional guidance	Mark
20(c)	<ul style="list-style-type: none"> <li data-bbox="434 276 1189 347">• general shape of increase from left to right <b>ALLOW</b> straight line (1)</li> <li data-bbox="434 395 1189 432">• two vertical stages for melting and boiling (1)</li> <li data-bbox="434 480 1189 587">• include the use of 273K for melting and 373K for boiling temperature either by labelling or position on x axis (1)</li> </ul>	<p data-bbox="1218 276 1895 347">Allow horizontal sections allowed between phase changes for M1</p> <p data-bbox="1218 517 1912 553">M3 is independent of M2, providing a line is drawn</p> <p data-bbox="1218 639 1464 676"><u>Example of graph</u></p> 	3

**(Total for Question 20 = 19 marks)**  
**(Total for Section C = 19 marks)**  
**Total for Paper = 90 marks**

